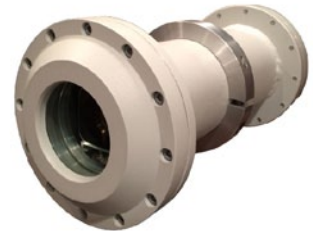


# Seatrax Boom Tip Camera System (CCTV)

As an optional feature for each crane, Seatrax offers its uniquely designed camera monitoring system for digital observation of the boom tip and/or hoist areas. This option can be installed on any new or existing Seatrax crane.

- **Boom Tip-mounted, Auto Focus Color High Definition Camera (Class 1, Zone 1)**

The camera system components are of Seatrax design utilizing auto-focusing technology for optimum resolution and picture quality with remote zoom from the operator's cabin. The camera(s) are mounted within enclosures that meet NEMA 4X/Zone 1 and IP66 standards. Each camera enclosure is also equipped with a fall protection lanyard.



- **15" Color Monitor located within Operator's Cabin (Safe Area)**

Seatrax provides a complete color monitor assembly located within the confines of the operator's cabin. This monitor is mounted in a position the operator can view without diverting attention away from the main control functions of the crane. The monitor has touchscreen controls for controlling the zoom and focus settings of the camera. Class 1 Div 2/Zone 2 monitors are also available.



- **Cab remote controls (Safe Area)**

The controls for operation of the camera system are located within the confines of the operator's cabin and can support up to four cameras for each crane. These controls provide the operator with zoom adjustment of the boom tip camera and choice of camera views if multiple cameras are installed. Use of these controls comes via a series of switches located within reach of the operator while in the seated position.

- **Additional Cameras (Optional)**

Additional cameras can be installed for use in safe or hazardous areas to monitor boom hoist or any other necessary area. Touch screen allows user to view each camera separately with up to four total cameras. All cameras can be recorded by the optional DVR system.



- **High Definition DVR Connection (Optional)**

The camera system has an optional Digital Video Recording feature that supports up to four separate camera locations upon each crane. The overall recording capacity of the DVR system is up to 7 days with four cameras before override of oldest data occurs. (Timeframe can be extended dependent upon the number of cameras connected and the adjusted resolution of each camera). The system is located within the operator's cabin in direct connection with the color monitor.

