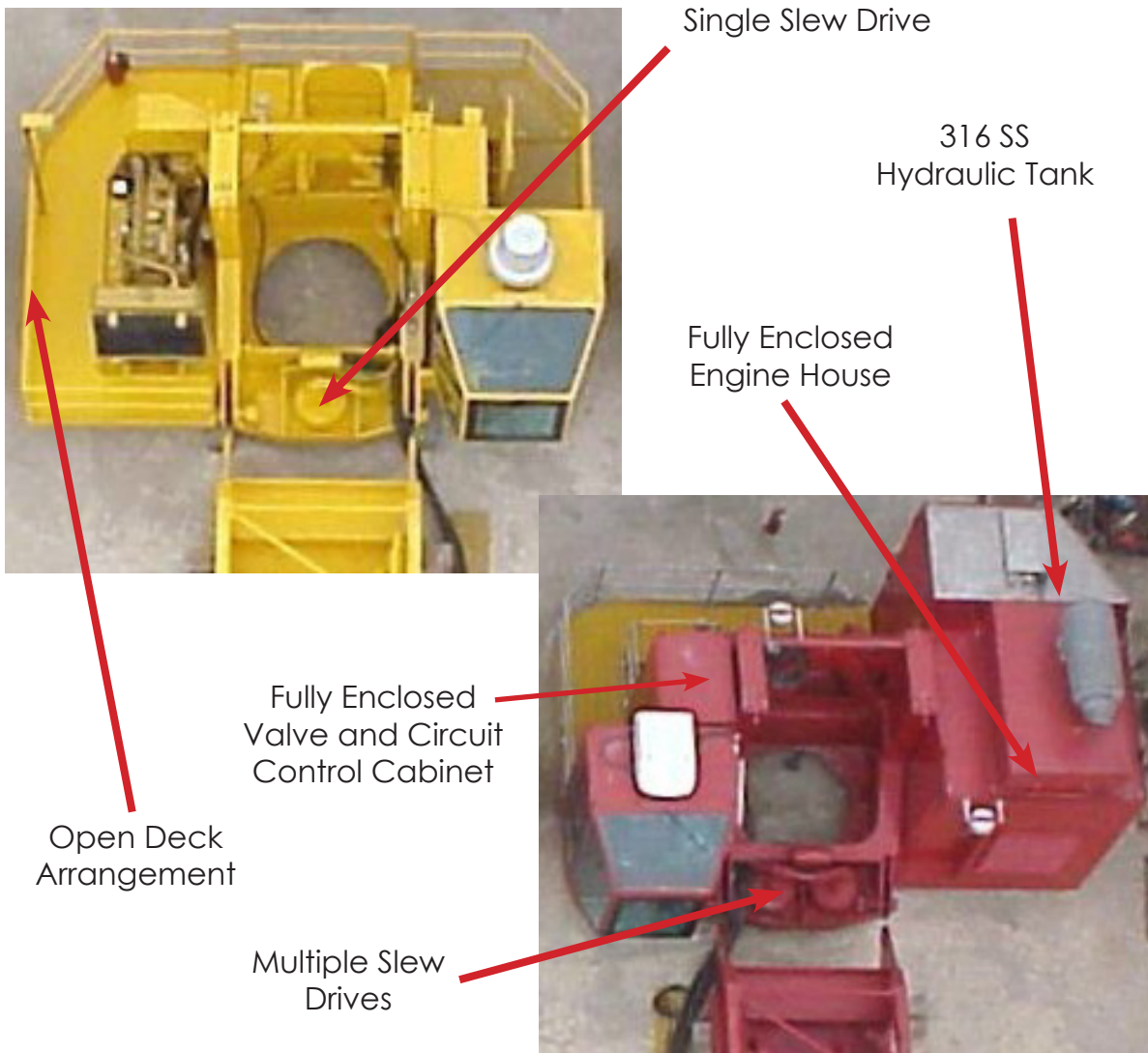


Drilling Duty vs. Production Installations

The Seatrax marine crane product line consists of a wide range of standard crane structures that can be equipped with several types of standard machinery packages. The crane structure size is determined from the lifting capacity/radius requirements. The machinery packages are determined by the intended service on the offshore installation.

The following pictorial displays the machinery arrangement differences between structurally identical cranes configured either for typical fixed platform support or drilling duty and floating installations.



Platform Support Crane

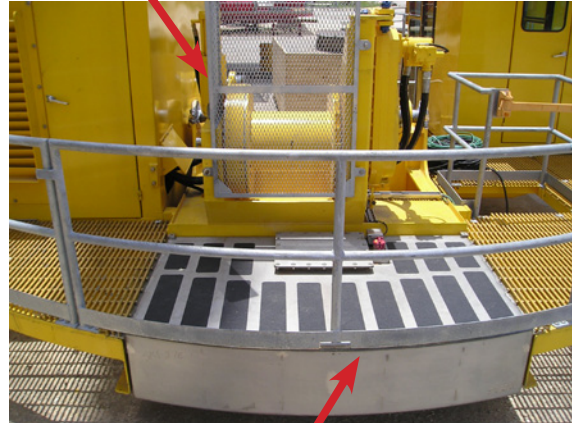
Drilling Duty and Floating Installations

Standard Luffing Machinery



Carbon Steel Fuel and Hydraulic Tank

High Performance Luffing Machinery



316 SS Fuel Tank



Standard Main/Auxiliary Hoisting Machinery

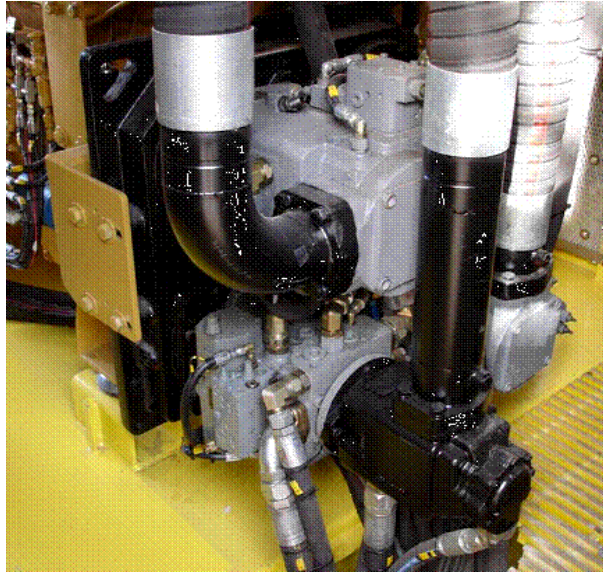


High Performance Main/Auxiliary Hoisting Machinery

Platform Support Fixed Gear Type Hydraulic System



Drilling Support-Variable Displacement Piston Hydraulic System



Drilling/Variable Displacement (Medium Flow) Advantages Over Platform Fixed Displacement

- Provides 50%+ faster operational speeds
- Provides 400%+ greater hydraulic component life
- Improved controllability for the operator
- Quieter operation (approximately 72 Dba vs. 85-90 Dba in the cab)